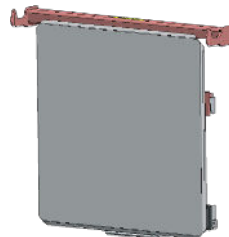




Single & mixed attachments

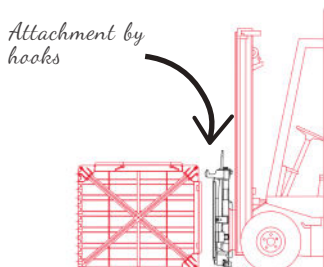
Single attachment

Attachment by hooks only : the hooks attach to the TSR® container by the bars on the housing. The spring mounted on oscillating holder keeps the bottles in place during handling.

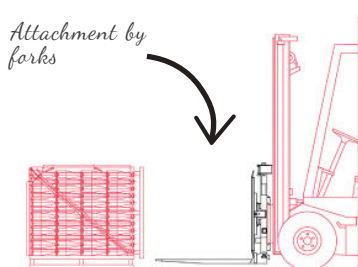


Mixed attachment

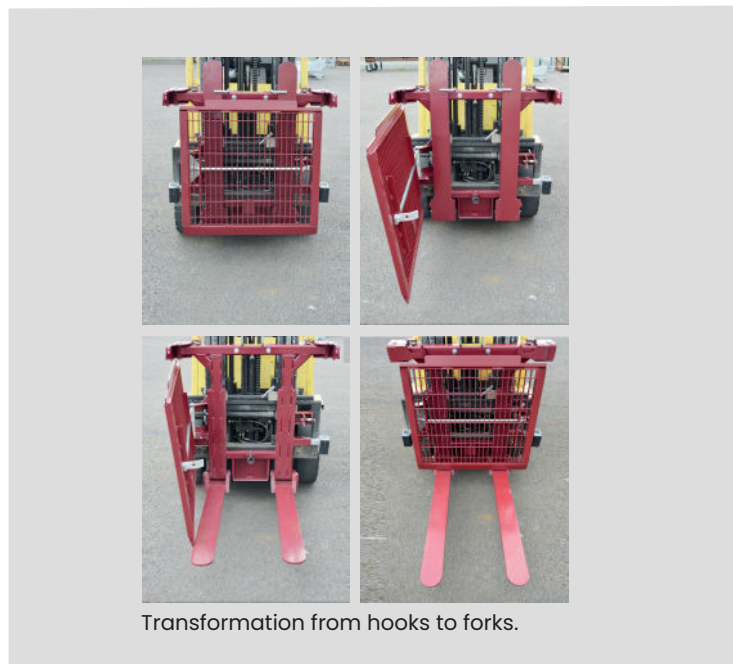
Attachment by hooks or forks : quick and easy transformation. The forks can be retracted behind the holder.



Forks up : single attachment by hooks for use with containers.



Forks down : traditional handling by forks for use with crates.

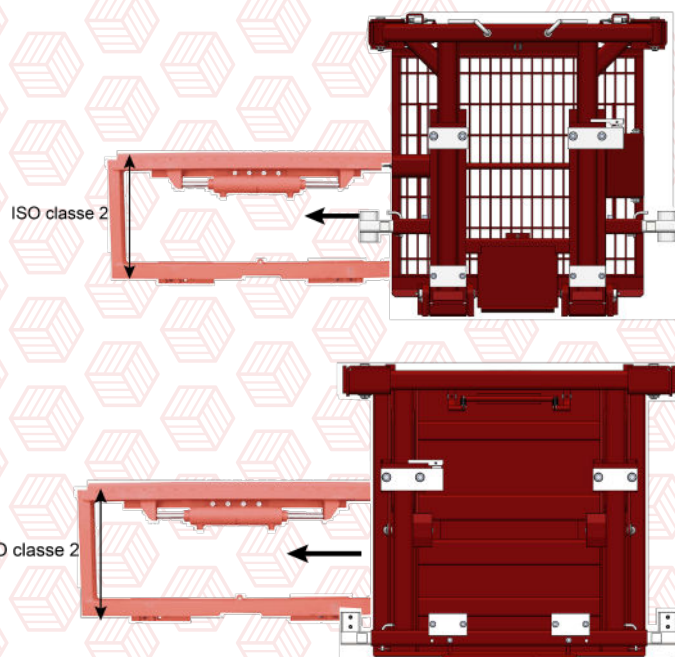


Installation

The attachment is fitted to the equipment holder manually, without the use of tools, on the ground and without the use of additional handling equipment. This is a 2-person operation, if necessary a pallet truck with a pallet can be used.

- 1 Retract the stop bolt.
- 2 Slide the unit laterally onto the equipment holder.
- 3 Center the attachment on the equipment holder.
- 4 Release the stop bolt.

For further details, please refer to the information provided with the product.



Made in France

The handy tool for storing and installing the attachment

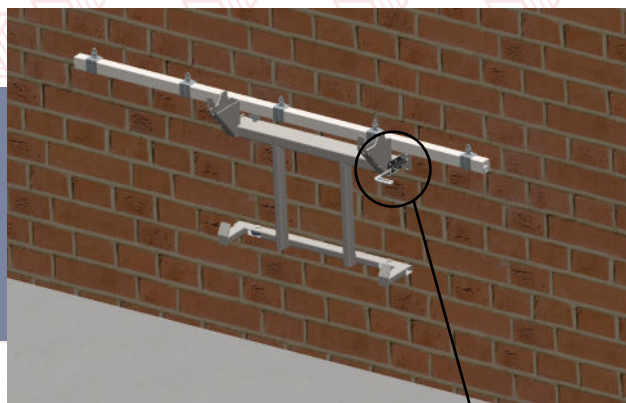
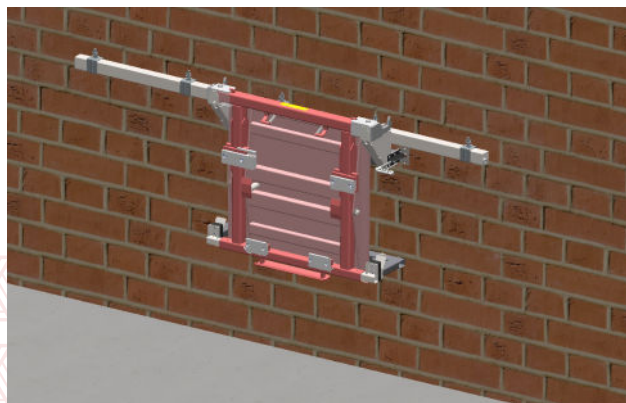
Wall-mounted attachment holder

➔ STORAGE OF THE ATTACHMENT

The wall-mounted attachment holder allows you to position one or two attachments (single and/or mixed) on the rail for storage when not in use

➔ INSTALLING THE ATTACHEMENT

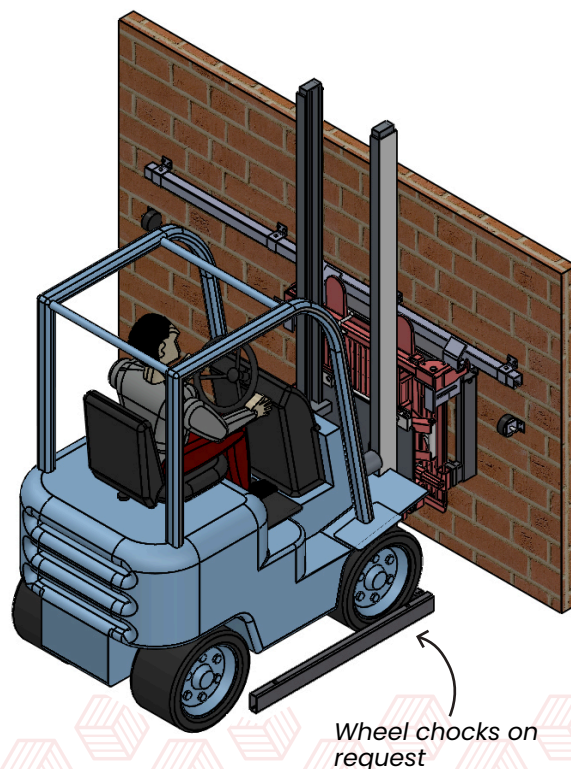
The wall bracket allows the forklift operator to install the attachment on the forklift without lifting it, thanks to the attachment sliding along the rail.



Locking the attachment onto the rail with a fixing latch.

THE BENEFITS

- ➔ Attachment installation by a single forklift operator.
- ➔ Facilitates the mounting of the attachment on the forklift's carriage!
- ➔ No heavy lifting, less risk of injury.



Wall mounting with rail designed for two single and/or mixed attachments.



Designed for standard and BL container attachments.

Fixing by yourself. Screws not supplied.